



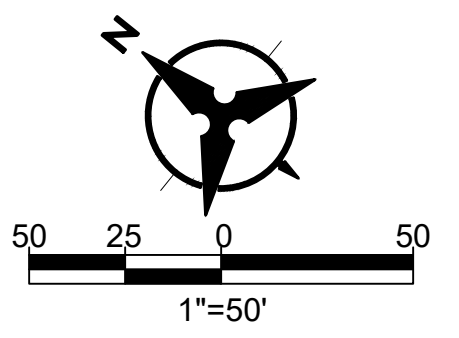
GENERAL NOTES:

- TRANSMISSION LINE SHALL BE CONSTRUCTED OF 8" C900 PVC, 8" HDPE OR 8" DUCTILE IRON.
- STATIONS SHOWN ARE ALONG CENTERLINE OF PIPE AND ELEVATIONS SHOWN ARE ALONG THE TOP OF PIPE.
- DO NOT DISTURB ROADWAY SURFACE WITHIN NM 574.
- REFER TO HORIZONTAL LAYOUT FOR ALIGNMENT INFORMATION.
- WORK SHALL BE CONDUCTED WITHIN EASEMENT LIMITS.
- REFER TO PROJECT TYPICAL SECTION / TRENCH DETAIL.
- CONTRACTOR SHALL PROVIDE 12" MIN CLEARANCE FOR CROSSING EXISTING UTILITIES.
- ALL WATERLINES SHALL BE 4' MIN BURY DEPTH.

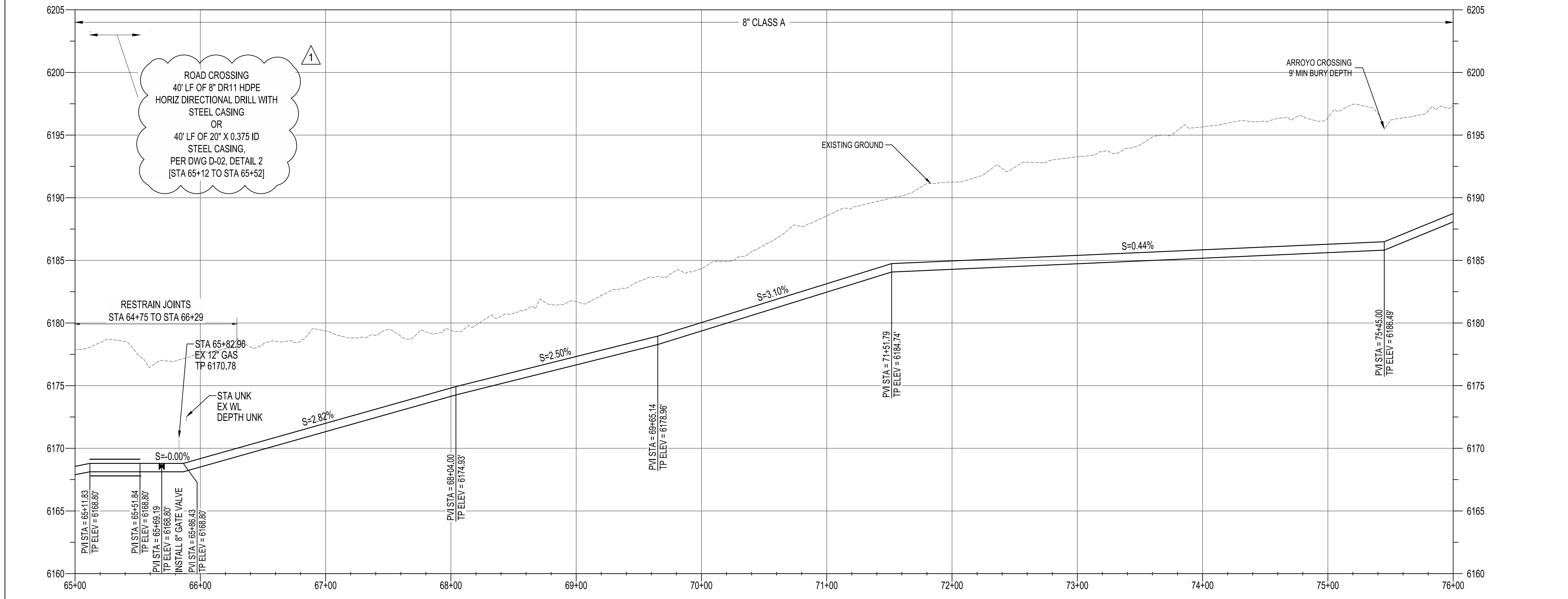
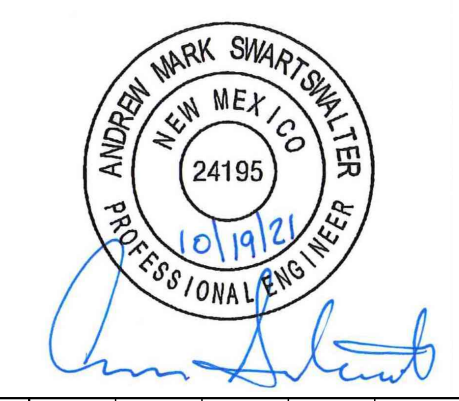
KEYED NOTES:

*NOTE THAT NOT ALL KEYED NOTES BELOW ARE NECESSARILY USED ON THIS SHEET. SEE KEYED NOTE CALLOUTS ON PLAN FOR APPLICABLE KEYED NOTES.

- INSTALL 8" WATERLINE
- CONNECTION TO EXISTING 6" WATERLINE WITH TAPPING SADDLE
- NEW 40 FT WATERLINE EASEMENT
- APPROXIMATE NM574 EDGE OF PAVEMENT
- EASEMENT COINCIDES WITH EDGE OF PAVEMENT
- TEMPORARY 10 FT CONSTRUCTION EASEMENT
- HORIZONTAL DIRECTIONAL DRILLING
- LIMITS OF PUMP STATION EASEMENT
- INSTALL CAV PER NMPWSS STD DWG 2350
- INSTALL 8" GATE VALVE
- INSTALL BELOW GRADE FLUSH HYDRANT PER DETAIL 2 ON DWG NO. D-03
- INSTALL 8" - 11.25° HORIZONTAL BEND
- INSTALL 8" - 22.5° HORIZONTAL BEND
- INSTALL 8" - 45° HORIZONTAL BEND
- INSTALL 8" - 90° HORIZONTAL BEND
- NOT USED
- ARROYO CROSSING
- INSTALL 8" X 8" X 6" TEE, INCLUDE VALVE AND 5 LF OF 8" WL CAPPED TO WEST FOR FUTURE CONNECTION.
- JACK AND BORE
- BORING PIT, 40' X 10'
- RECEIVING PIT, 20' X 20'
- INSTALL VACUUM BREAKER AIR VALVE PER STD DWG. 2350
- INSTALL 1" SERVICE LINE, METER BOX AND ASSEMBLY (FIELD LOCATE BY OWNER) PER STD DWGS 2362, 2366, AND 2369.



ENGINEER'S SEAL



NOTICE OF EXTENDED PAYMENT PROVISION: THIS CONTRACT ALLOWS THE OWNERS TO MAKE PAYMENT WITHIN 45 DAYS AFTER SUBMISSION OF AN UNDISPUTED REQUEST FOR PAYMENT.



**SAN JUAN COUNTY
EAST CULPEPPER WATER CONNECTION
PHASE 1: TRANSMISSION LINE AND BOOSTER STATION
STA 65+00 TO STA 76+00 PLAN AND PROFILE**

AS-BUILT INFORMATION		REVISIONS		DESIGN	
CONTRACTOR	DATE	NO.	DATE	DESIGNED BY	CHECKED BY
		1	10/19/21	BS	AMS
					NEC

Tue, 19-Oct-2021 9:35 am, Plotted by: DDEPAULI
C:\Users\ddepaull\appdata\local\temp\AcPublish_174241C-6-E-Culpepper Phase 1 Alignment.dwg

VERTICAL SCALE: 1"=5'