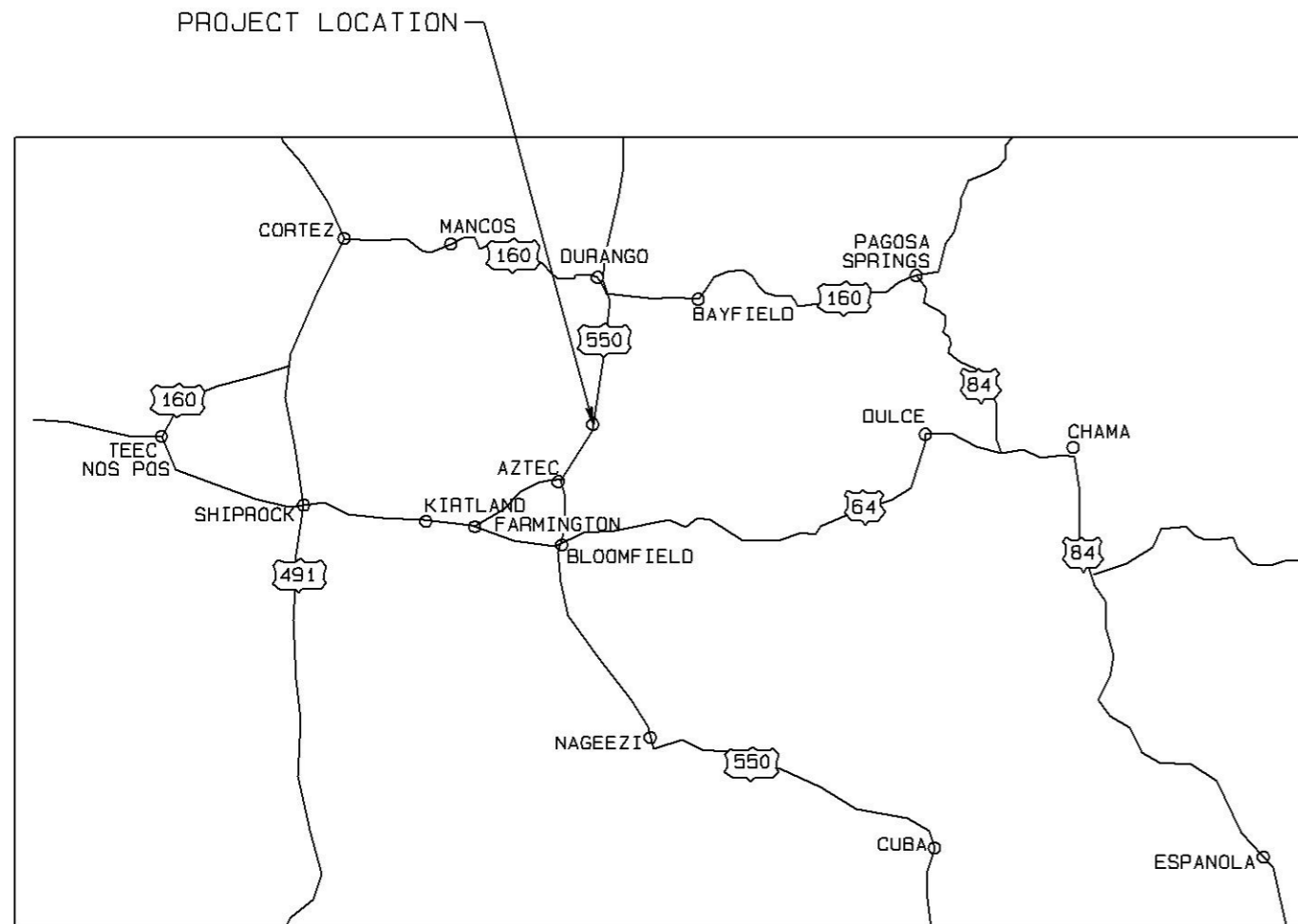


San Juan County River Access at Cedar Hill

Aztec, New Mexico

Prepared For

San Juan County

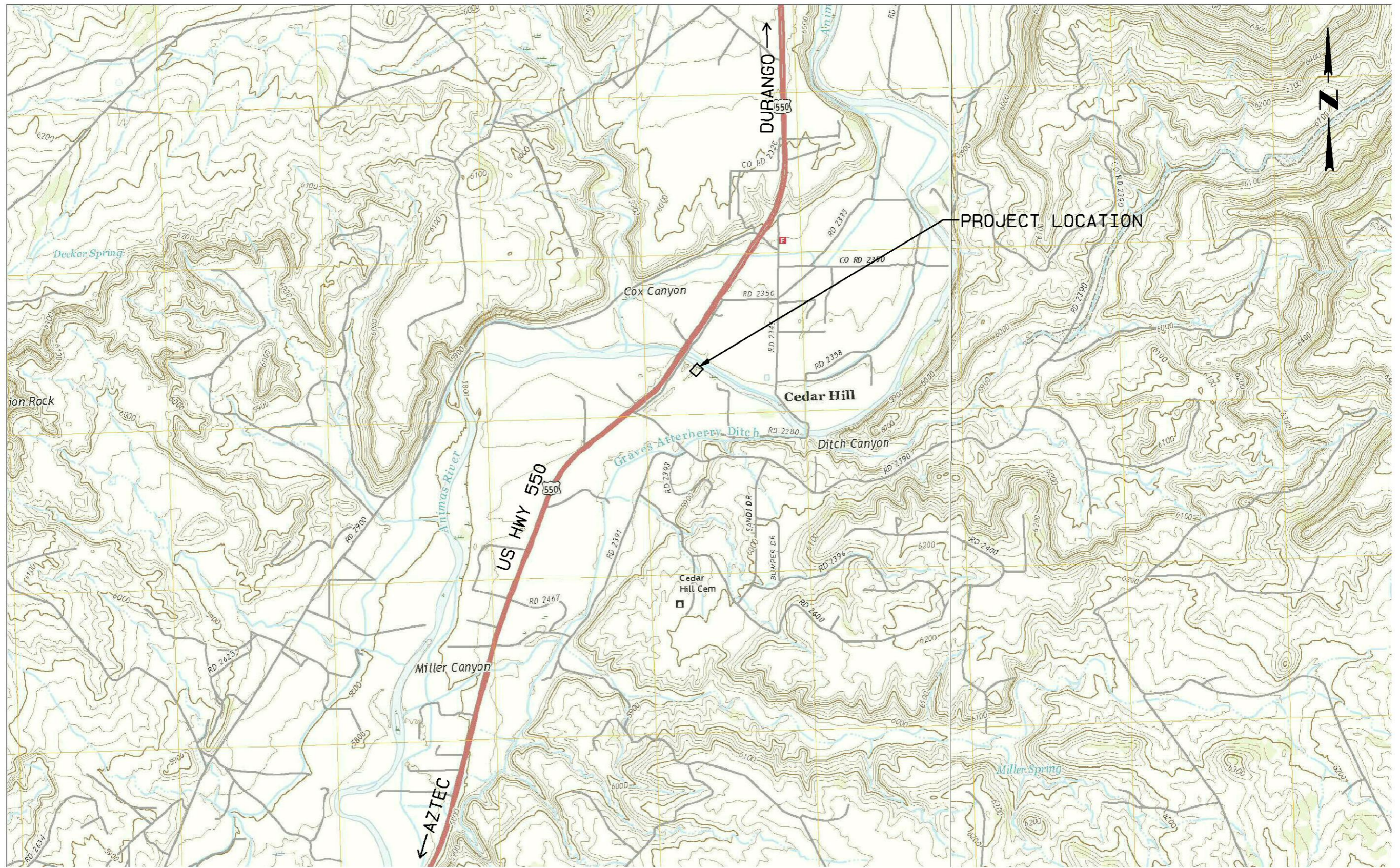


LOCATION MAP

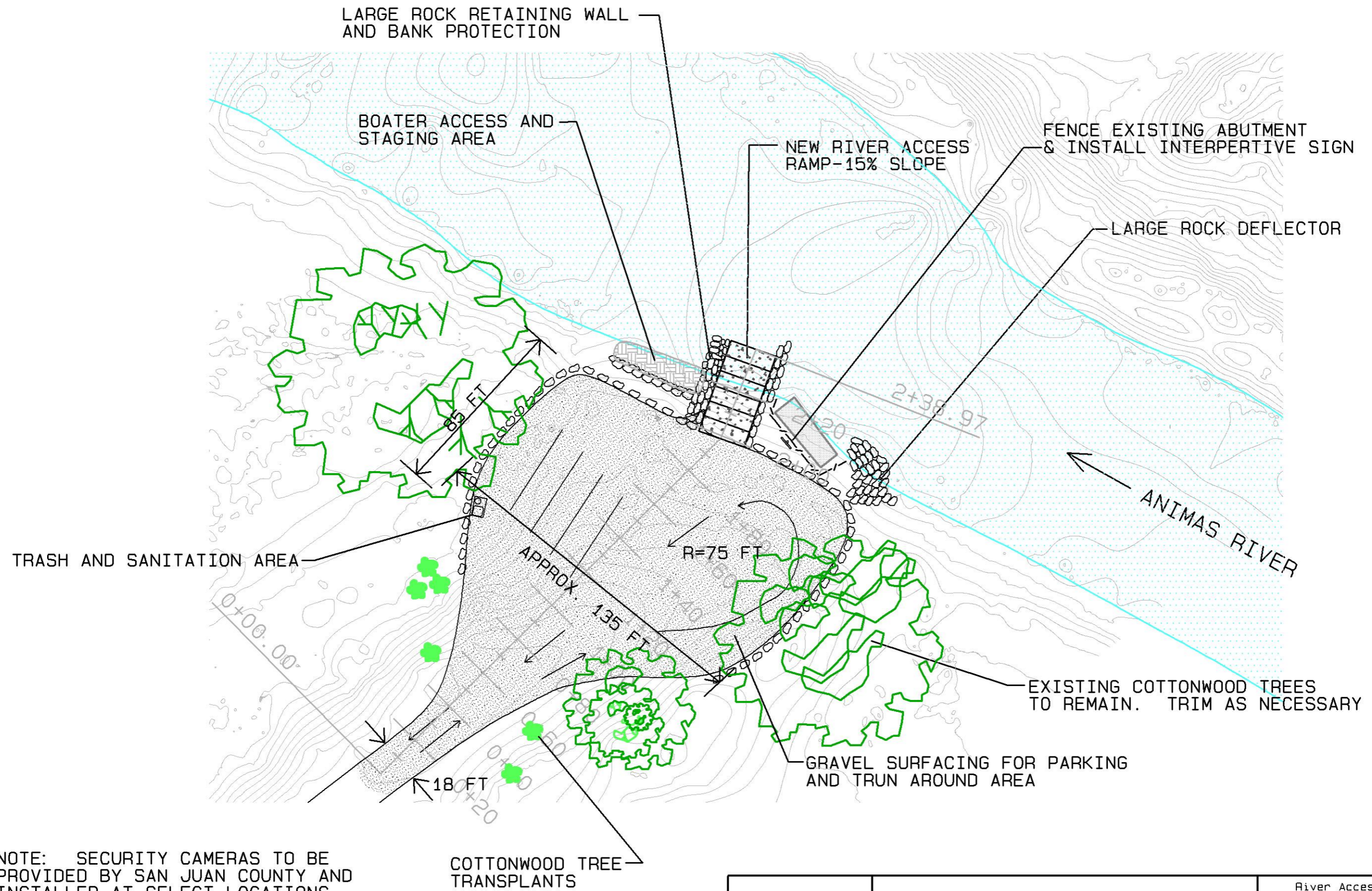
Index of Drawings

1. Cover Sheet, Location Map & Index of Drawings
2. Project Location Map
3. Site Plan
4. Project Profile
5. Access Road & Parking Grading Plan
6. Boat Ramp Profile Detail
7. Boat Ramp Section Detail
8. Parking Area Section Detail
9. Rock Deflector Details
10. Boater Access Area & Cottonwood Planting Details
11. Interpretive Sign Board & Pipe Rail Fence Details

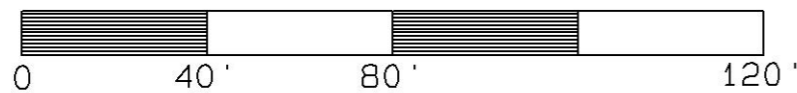
	Riverbend Engineering, LLC 5929 Pauline St NW Albuquerque, NM 87107 Tel: 505.344.3315 Email: cphilips@riverrestoration.net	River Access Final Design	
		Animas River at Cedar Hill	Sheet
		COVER SHEET, INDEX OF DRAWINGS AND LOCATION MAP	1 of 11
		NTS	3-14-22



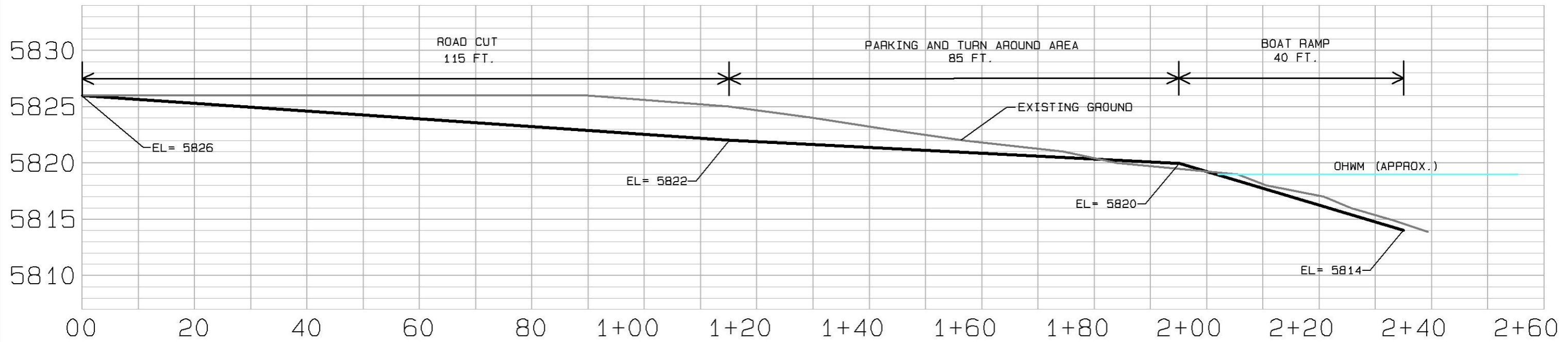
Riverbend Engineering, LLC 5929 Pauline St NW Albuquerque, NM 87107 Tel: 505.344.3315 Email: cphilips@riverrestoration.net		River Access Final Design	
		Animas River at Cedar Hill	Sheet 2 of 11
		PROJECT LOCATION MAP	
		NTS	3-14-22



NOTE: SECURITY CAMERAS TO BE PROVIDED BY SAN JUAN COUNTY AND INSTALLED AT SELECT LOCATIONS

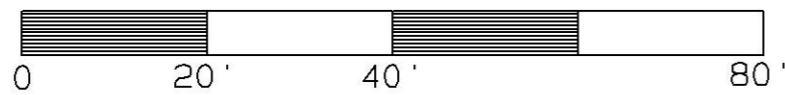
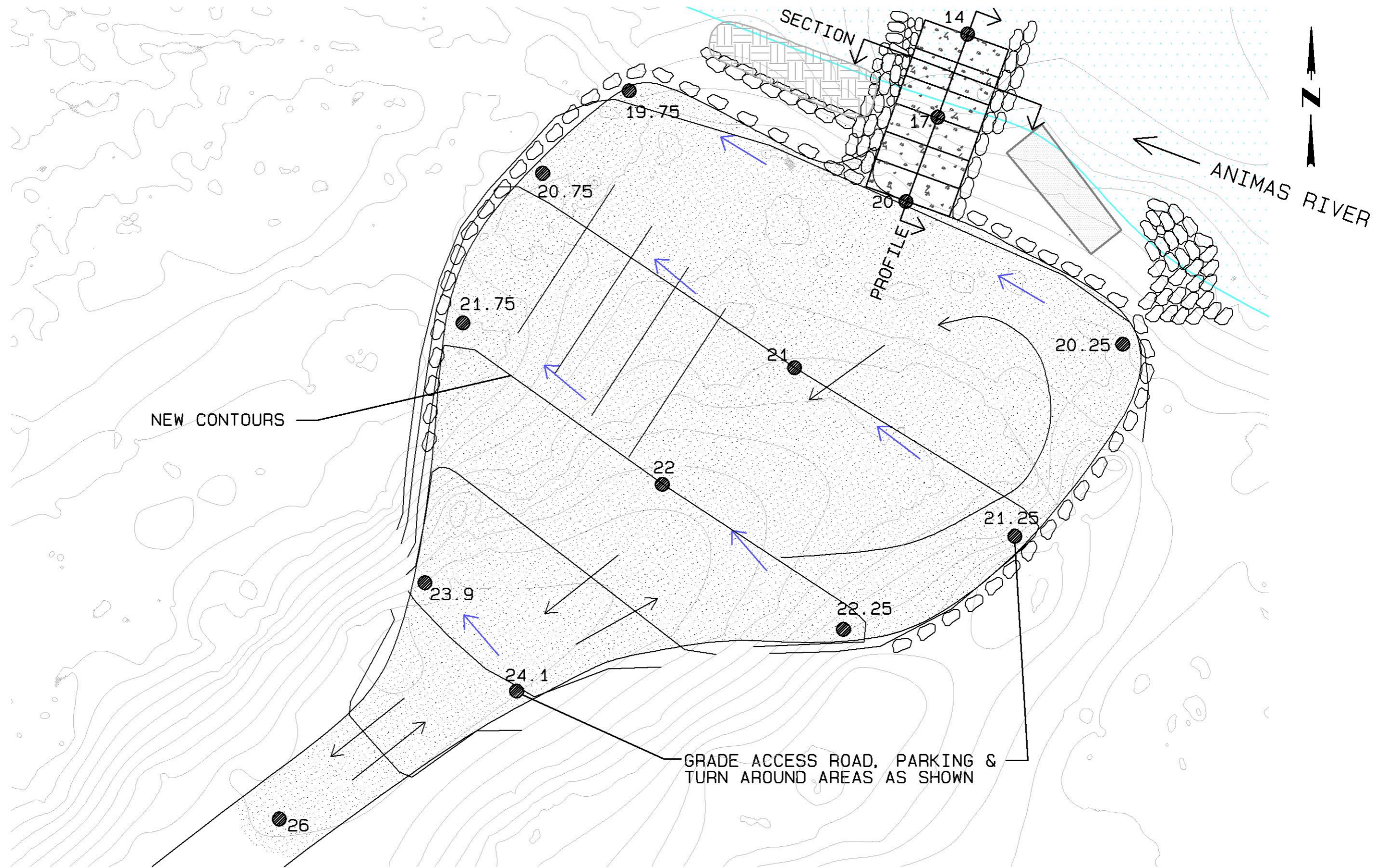


Riverbend Engineering, LLC 5929 Pauline St NW Albuquerque, NM 87107 Tel: 505.344.3315 Email: cphilips@riverrestoration.net	River Access Final Design	
	Animas River at Cedar Hill	Sheet
	SITE PLAN	3 of 11
	Scale: 1' = 40 ft	3-14-22



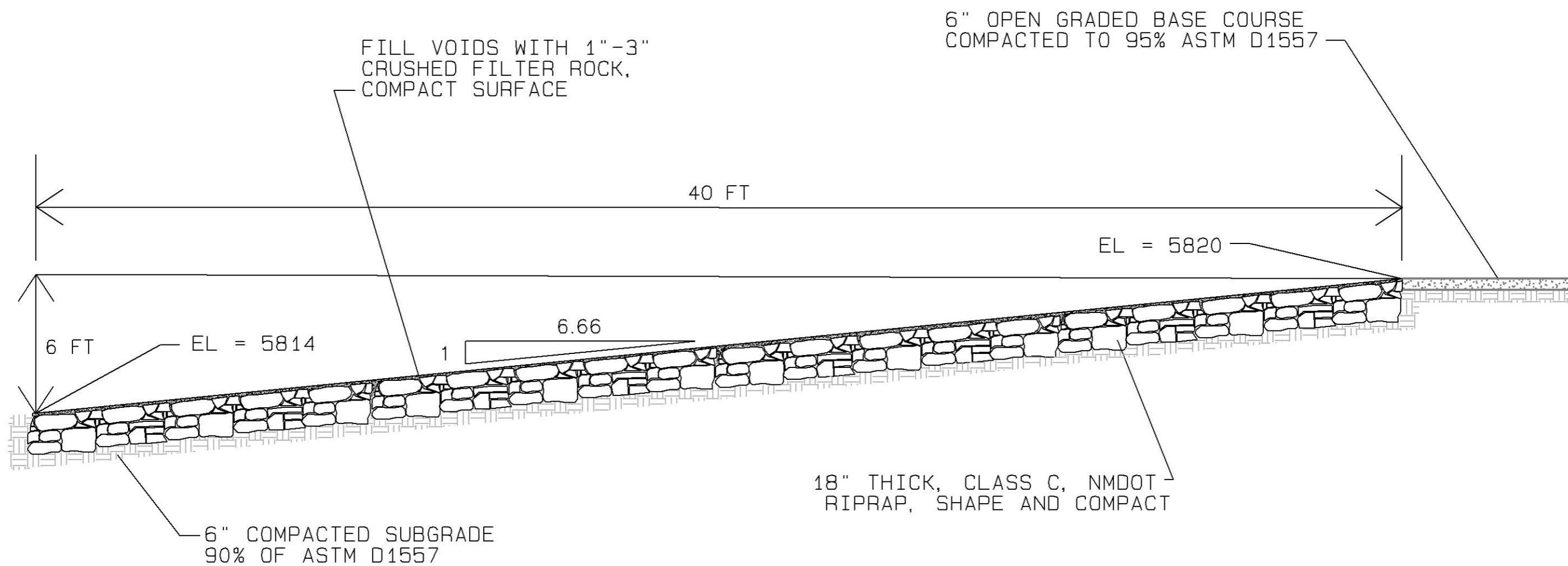
PROJECT PROFILE
NTS

	Riverbend Engineering, LLC 5929 Pauline St NW Albuquerque, NM 87107 Tel: 505.344.3315 Email: cphilips@riverrestoration.net	River Access Final Design	
		Animas River at Cedar Hill	Sheet
		PROJECT PROFILE	4 of 11
		NTS	3-14-22



GRADE ACCESS ROAD, PARKING & TURN AROUND AREAS AS SHOWN

Riverbend Engineering, LLC 5929 Pauline St NW Albuquerque, NM 87107 Tel: 505.344.3315 Email: cphilips@riverrestoration.net		River Access Final Design	
		Animas River at Cedar Hill	Sheet
ACCESS ROAD & PARKING GRADING PLAN		5	of
		11	
Scale: 1' = 20 ft		3-14-22	



RIVER ACCESS RAMP
 PROFILE VIEW
 NTS

	Riverbend Engineering, LLC 5929 Pauline St NW Albuquerque, NM 87107 Tel: 505.344.3315 Email: cphilips@riverrestoration.net	River Access Final Design	
		Animas River at Cedar Hill	Sheet
		BOAT RAMP PROFILE	6 of 11
		NTS	3-14-22

LARGE ROCKS
4' - 5' MIN.
DIMENSION
(MEASURED ON
MEDIAN AXIS)

20 FT

FILL VOIDS WITH 1"-3"
CRUSHED FILTER ROCK,
COMPACT SURFACE

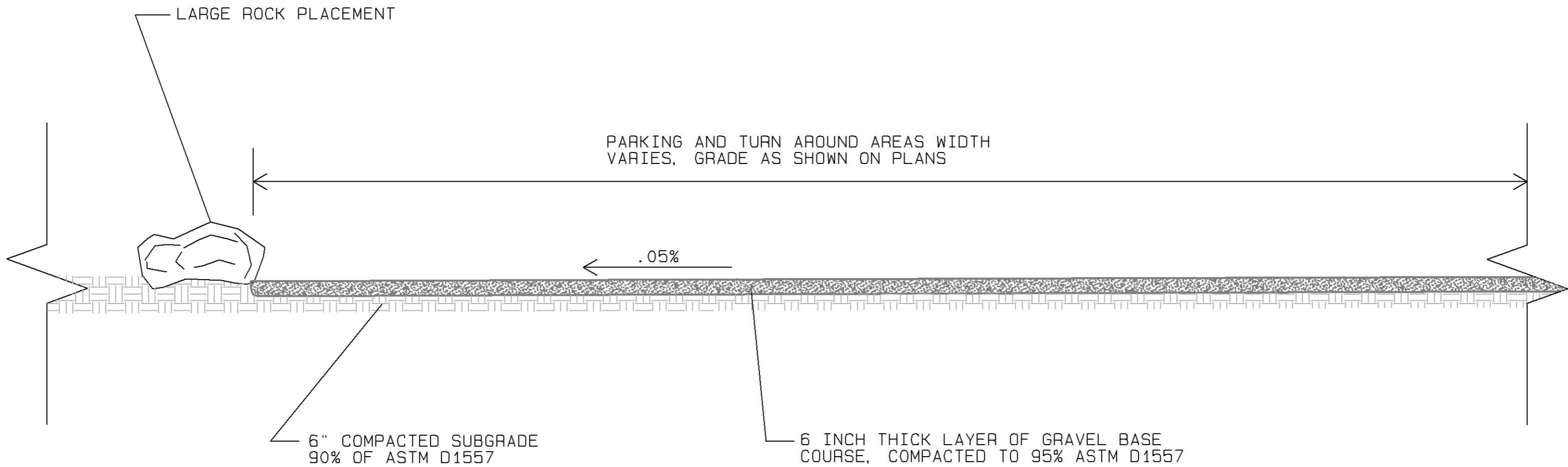
FOOTER ROCK

18" THICK, CLASS C, NMDOT
RIPRAP, SHAPE AND COMPACT

COMPACTED SUBGRADE
90% OF ASTM D1557

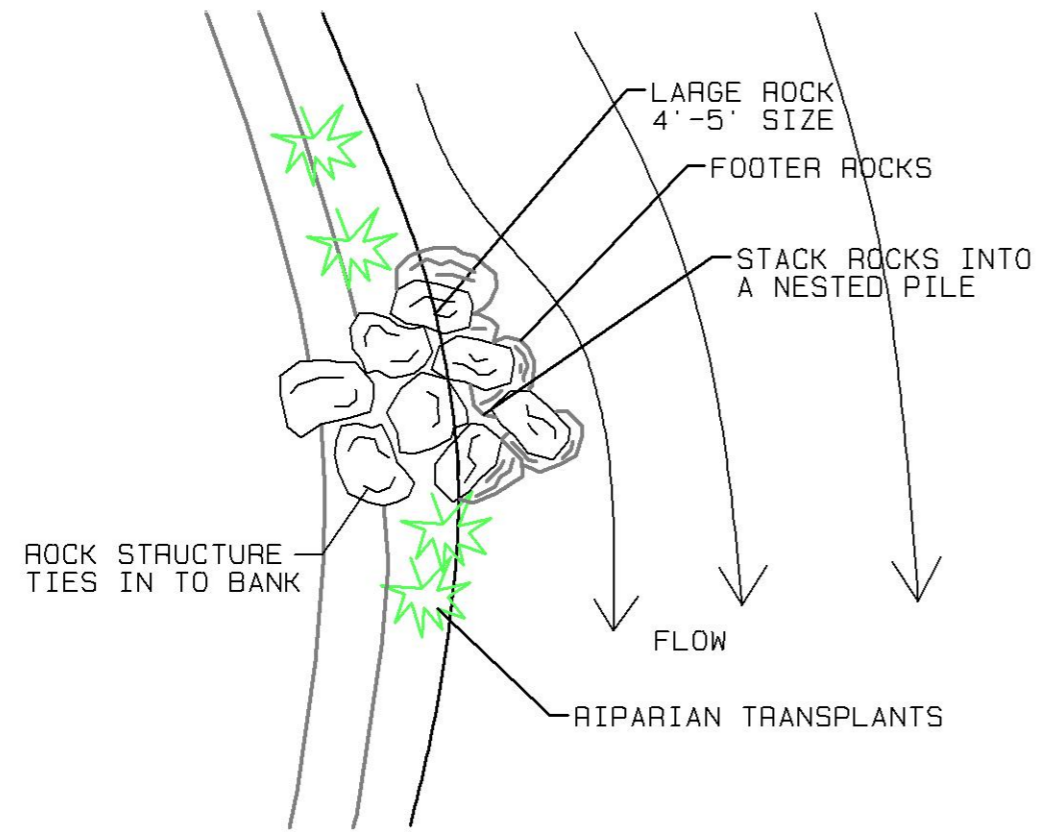
RIVER ACCESS RAMP
SECTION VIEW
NTS

	Riverbend Engineering, LLC 5929 Pauline St NW Albuquerque, NM 87107 Tel: 505.344.3315 Email: cphilips@riverrestoration.net	River Access Final Design	
		Animas River at Cedar Hill	Sheet
		BOAT RAMP SECTION	7 of 11
		NTS	3-14-22

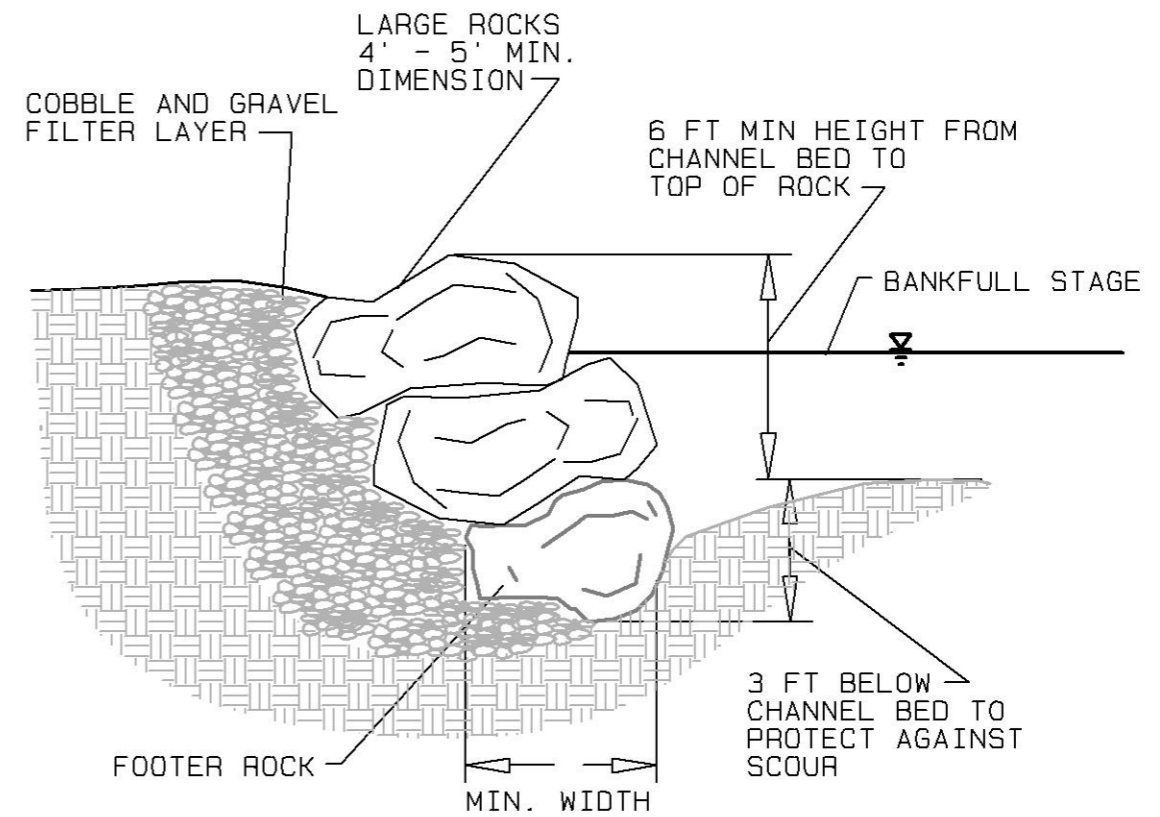


PARKING LOT
SECTION VIEW
NTS

	Riverbend Engineering, LLC 5929 Pauline St NW Albuquerque, NM 87107 Tel: 505.344.3315 Email: cphilips@riverrestoration.net	River Access Final Design	
		Animas River at Cedar Hill	Sheet
		PARKING AREA SECTION	8
			of
NTS	3-14-22	11	

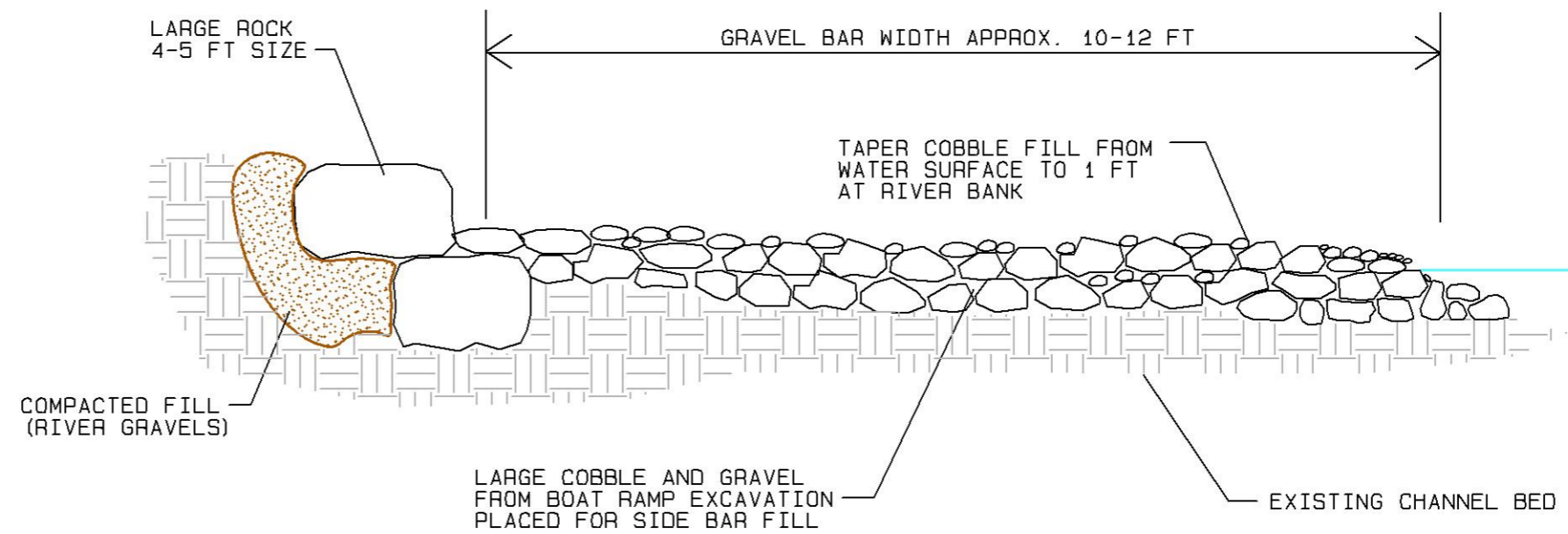


ROCK DEFLECTOR PLAN
NTS

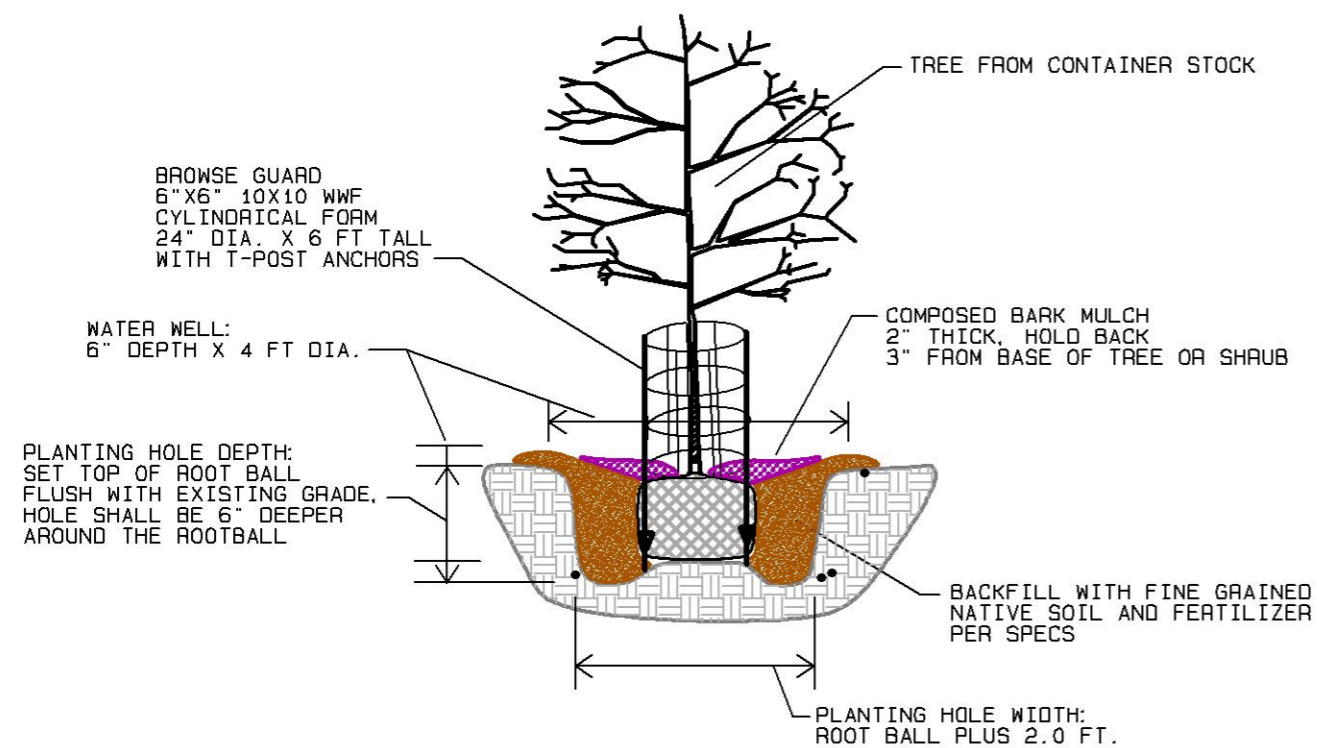


ROCK BANK PROTECTION
SECTION VIEW
NTS

	Riverbend Engineering, LLC 5929 Pauline St NW Albuquerque, NM 87107 Tel: 505.344.3315 Email: cphilips@riverrestoration.net	River Access Final Design	
		Animas River at Cedar Hill	Sheet
		ROCK DEFLECTOR DETAILS	9 of 11
		NTS	3-14-22

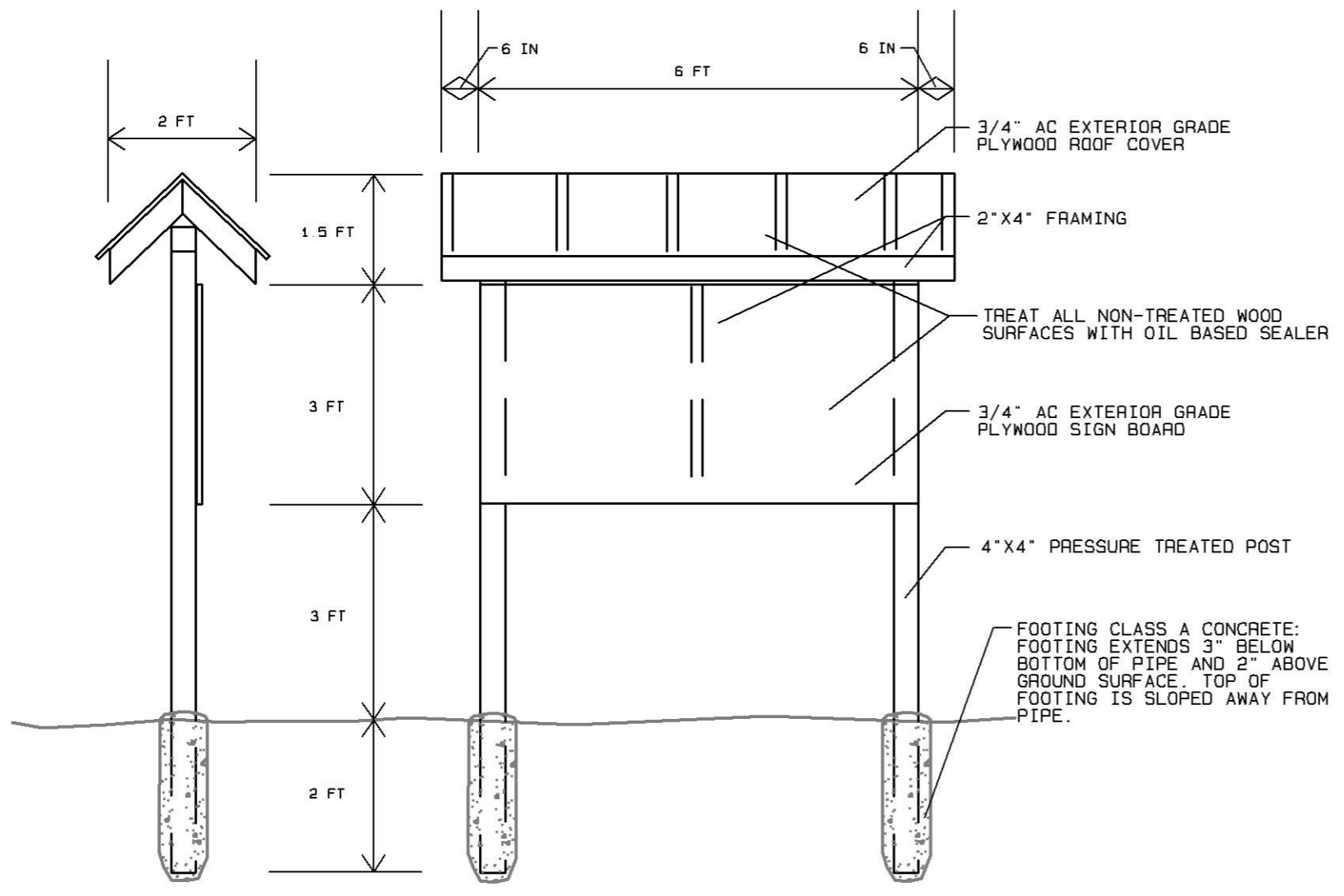


BOATER ACCESS AND STAGING AREA
SECTION VIEW
NTS

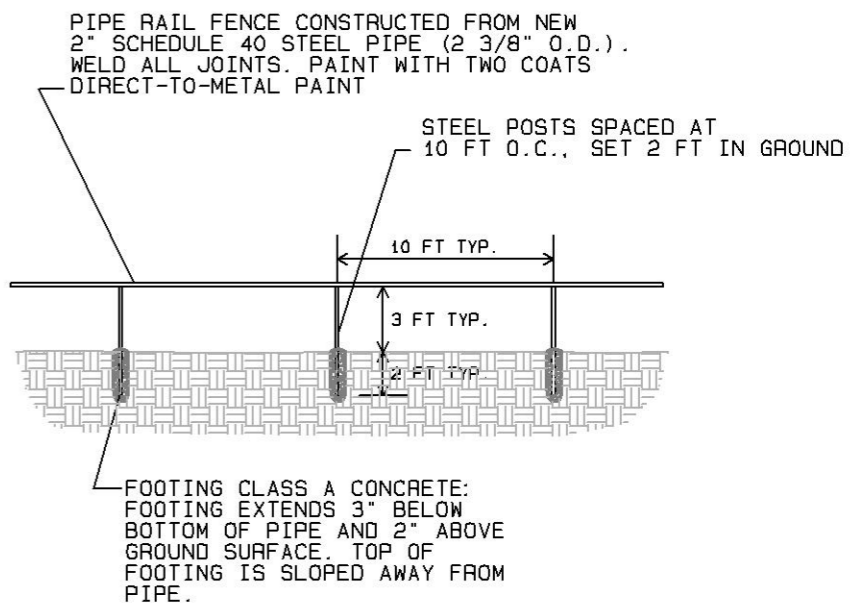


CONTAINER STOCK DECIDUOUS TREE/SHRUB DETAIL
NTS

Riverbend Engineering, LLC 5929 Pauline St NW Albuquerque, NM 87107 Tel: 505.344.3315 Email: cphilips@riverrestoration.net	River Access Final Design	
	Animas River at Cedar Hill	Sheet
	BOATER ACCESS AREA & COTTONWOOD PLANTING DETAILS	10 of 11
	NTS	3-14-22



INTERPRETIVE SIGN BOARD



PIPE RAIL FENCE SECTION

	Riverbend Engineering, LLC		River Access Final Design	
	5929 Pauline St NW Albuquerque, NM 87107		Animas River at Cedar Hill	
	Tel: 505.344.3315 Email: cphilips@riverrestoration.net		Sheet	
			11	
		INTERPRETIVE SIGN BOARD & PIPE RAIL FENCE DETAILS		of
		NTS		11
		3-14-22		