

SAN JUAN COUNTY MULTI-USE BUILDING 2022 LIGHTING REPLACEMENT PROJECT

41 Rd 5568, Farmington, NM 87401

Owner

San Juan County Parks & Facilities Department
100 South Oliver Drive
Aztec, NM 87401
Contact:
Steve Darsie
Deputy Director, Parks & Facilities
steve.darsie@spcounty.net
(505) 324-5569

MEP Engineer

Mechanical, Electrical & Environmental Engineering
572 East 3rd Avenue
Durango, CO 81301
Contact:
Dustin Sullivan, Project Manager
Sean Brophy, Electrical Engineer
Dustin Sullivan, Mechanical Engineer
dustin@meengineering.com
(970) 365-1570



2022-06-29

E

D

C

B

A

REVISIONS (DATE NAME)

PROJECT NO: 2204
DATE: 2022-06-28

DRAWN BY: NB
CHECKED BY: DS

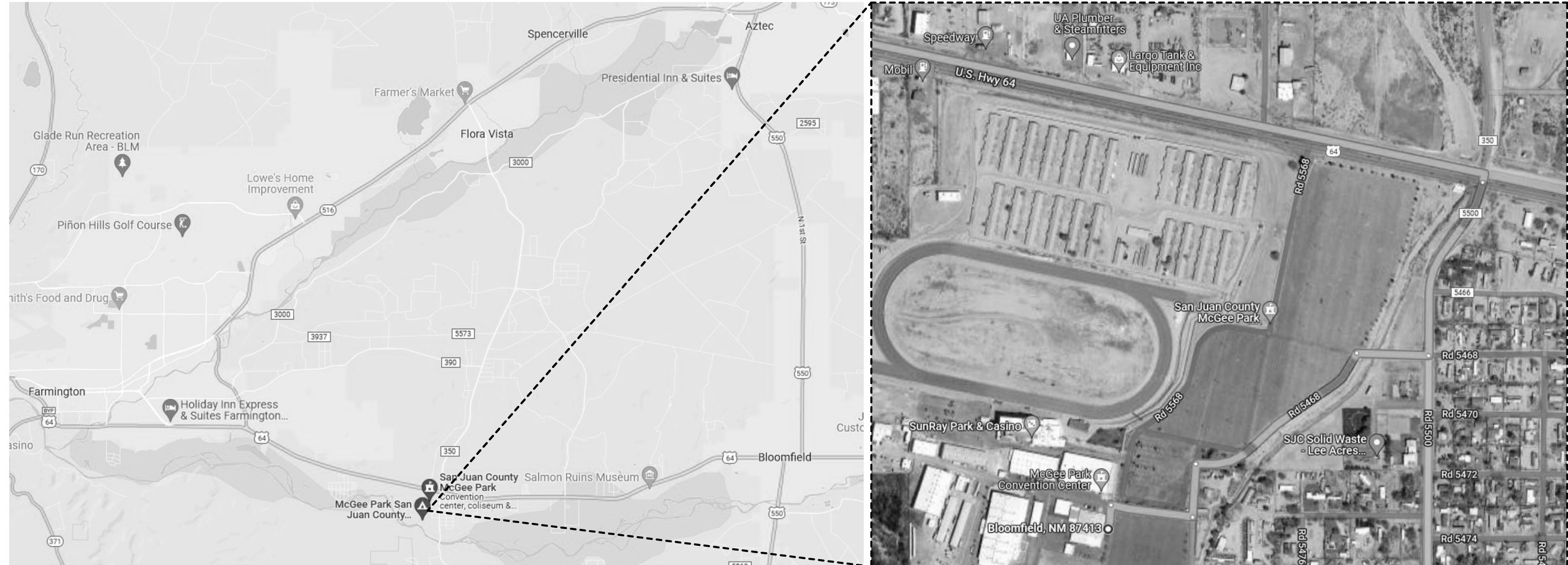
COPYRIGHT MECHANICAL
ELECTRICAL & ENVIRONMENTAL
ENGINEERING, INC. 2007

SHEET TITLE:

G001

PROJECT INFORMATION

ELECTRICAL SYMBOLS LEGEND													
<h3>LIGHTING</h3> <ul style="list-style-type: none"> RECTANGULAR FIXTURE, CEILING MOUNTED (DIMENSIONS AS SHOWN) ROUND FIXTURE, CEILING MOUNTED (DIMENSIONS AS SHOWN) TRACK LIGHTING (LENGTH AS SHOWN, HEADS NOT TO SCALE) POLE MOUNTED FIXTURE (HEADS NOT TO SCALE) ARM SYMBOL ADDITION INDICATES WALL MOUNTING DOT SYMBOL ADDITION INDICATES PENDANT MOUNTING BOX SYMBOL ADDITION INDICATES FLOOR OR IN-GROUND MOUNTING HALF FILLED SYMBOL INDICATES EMERGENCY VERSION EXIT SIGNS (FLL INDICATES NUMBER OF FACES) WITH LIGHTS DOUBLE ARROW FACE <p>NOTES: 1. Lower case letters after a comma in the fixture designation indicate switching. For example, "A3, 3" indicates a type A3 fixture controlled by switch A. 2. A fixture designation ending in "E" indicates an emergency fixture, even when the fixture symbol has no small circle shown at all. 3. Dimensions and mounting heights in the lighting fixture schedule supersede information implied by these symbols. Symbols are for general reference only.</p>	<h3>FIRE ALARM</h3> <ul style="list-style-type: none"> FIRE ALARM (FA) CONTROL PANEL FA ANNUNCIATOR FA ADA HORN/STROBE FA CEILING MOUNTED FA HORN/STROBE FA ADA STROBE FA CEILING MOUNTED FA STROBE FA FIRE ALARM PULL STATION FA FIRE SMOKE DAMPER FA REMOTE INDICATOR FA FLOW SWITCH FA TAMPER SWITCH FA GAS DETECTOR FA SMOKE DETECTOR FA HEAT DETECTOR FA DUCT SMOKE DETECTOR 												
<h3>COMMUNICATIONS</h3> <ul style="list-style-type: none"> DATA OUTLET, ABOVE COUNTER ANALOG PHONE OUTLET COMBINATION DATA & ANALOG PHONE OUTLET COMBINATION DATA & ANALOG PHONE OUTLET, ABOVE COUNTER BOX INDICATES FLUSH MOUNTING IN FLOOR CIRCLE INDICATES FLUSH MOUNTING IN CEILING SUBSCRIPT INDICATES QUANTITY OF PORTS (IF MORE THAN 1) MICROPHONE, CEILING, WALL AND FLOOR MOUNTED RESPECTIVELY SPEAKER, CEILING, WALL AND FLOOR MOUNTED RESPECTIVELY WALL MOUNTED HORN/SPEAKER WIRELESS ACCESS POINT INTERCOM CONTROL SWITCH 	<h3>POWER DISTRIBUTION</h3> <ul style="list-style-type: none"> SURFACE MOUNTED ELECTRICAL PLUG-IN RACKWAY DISCONNECT SWITCH 20A FRACTIONAL HORSEPOWER DISCONNECT SWITCH WITH THERMAL OVERLOAD PROTECTION, 2P+2POLE CONTROL STATION METER RELAY THERMOSTAT OUTLET BOX, SINGLE GANG BACK BOX, FLASHER (UNLESS OTHERWISE NOTED) 1" CONDUIT AND PULL CORD TO MEDIUM JUNCTION BOX, CEILING, WALL AND FLOOR MOUNTED RESPECTIVELY BRANCH CIRCUIT PANEL BOARD, SEE SCHEDULE FOR MOUNTING PAD MOUNT TRANSFORMER WALL MOUNT TRANSFORMER SURGE PROTECTION DEVICE GROUND CONDUIT SUB-OUT LIGHTNING SURGE ARRESTOR 												
<h3>LINETYPES</h3> <ul style="list-style-type: none"> SOLID BLACK INDICATES NEW DEVICE GRAY INDICATES EXISTING DEVICE TO REMAIN DASHED INDICATES EXISTING DEVICE TO BE DEMOLISHED DASHED WITH "R" INDICATES EXISTING DEVICE TO BE RELOCATED 	<h3>ABBREVIATIONS</h3> <ul style="list-style-type: none"> AC ABOVE COUNTER AFF ABOVE FINISHED FLOOR AFG ABOVE FINISHED GRADE ARCH ARCHITECTURAL BC BELOW COUNTER C CONDUIT EC ELECTRICAL CONTRACTOR ELEC ELECTRICAL EMT ELECTRICAL METALLIC TUBING GC GENERAL CONTRACTOR GEC GROUND ELECTRODE CONDUCTOR GRG GALVANNEED IRON CONDUIT GRD GROUND GFI GROUND FAULT INTERRUPTER IG ISOLATED GROUND IMC INTERMEDIATE METALLIC CONDUIT LA LIGHTNING ARRESTOR ME MECHANICAL CONTRACTOR MCH MECHANICAL NC NOT IN CONTRACT NFS NOT TO SCALE O/E OVERHEAD ELECTRICAL FEEDER O/P OVERHEAD PRIMARY FEEDER O/S OVERHEAD SECONDARY FEEDER PVC POLYVINYL CHLORIDE PLUMB PLUMBING PNL PANEL ROU ROOF TOP UNIT T/S TRANSIENT VOLTAGE SURGE SUPPRESSOR UG UNDERGROUND USE UNDERGROUND ELECTRICAL FEEDER UPS UNDERGROUND PRIMARY FEEDER LI UNINTERRUPTIBLE POWER SUPPLY WP WEATHERPROOF TRF TRANSFORMER VTRB TRANSFORMER 												
<h3>MOUNTING</h3> <p>KEY: MOUNTING HEIGHTS A 9" TO TOP AND NOT LESS THAN 6" BELOW FINISHED CEILING WHERE REQUIRED B 8" TO BOTTOM AND NOT GREATER THAN 8" TO TOP C 6" AFF D 48" TO TOP AFF E 20" TO TOP AFF F 3" G 3" H 5/8" TO HOLE J 6" MAX</p> <p>NOTES: 1. VERIFY ALL MOUNTING HEIGHTS WITH ARCHITECT PRIOR TO ROUGH-IN. 2. DIMENSIONS ARE TO TOP OF DEVICE WITH FINAL ADJUST BACK BOX LOCATION AS REQUIRED. 3. ALL MOUNTING HEIGHTS SHALL CONFORM TO THE LATEST EDITION OF THE AMERICANS WITH DISABILITIES ACT (ADA).</p>	<h3>GENERAL NOTES</h3> <ul style="list-style-type: none"> KEYED NOTE MECHANICAL EQUIPMENT IDENTIFICATION KITCHEN EQUIPMENT IDENTIFICATION 												
<h3>GENERAL DEMOLITION NOTES</h3> <ol style="list-style-type: none"> IF CONCEALED OR UNKNOWN CONDITIONS ARE UNCOVERED AND ARE AT A VARIANCE WITH CONDITIONS SHOWN IN THE CONTRACT DOCUMENTS OR OF AN UNUSUAL NATURE NOT ORDINARILY ENCOUNTERED IN WORK OF THIS KIND, NOTICE MUST BE GIVEN TO THE ENGINEER BEFORE PROCEEDING WITH ANY ADDITIONAL WORK. NO CLAIM FOR ADDITIONAL COST OR THE EXTENSION WILL BE ALLOWED WITHOUT PROPER NOTICE, PROPER DOCUMENTATION OF TIME, AND EXPENSE TO THE OWNER. THE DEMOLITION PLAN SHALL BE USED AS A SCHEMATIC GUIDE TO DEMOLITION ONLY. ADDITIONAL DEMOLITION MAY BE REQUIRED TO COMPLETE THE NEW CONSTRUCTION. DEMOLITION AS INDICATED ON THE DRAWINGS. CONTRACTOR TO REPORT DEFICIENCIES RELATED TO DEMOLITION WORK THAT WILL AFFECT NEW CONSTRUCTION TO THE OWNER/ENGINEER FOR DETERMINATION OF REQUIRED ACTION. DAMAGE ON THE CONSTRUCTION SITE CAUSED BY THE CONTRACTOR OR A PARTY TO THE CONTRACTOR DURING THE DEMOLITION OF CONSTRUCTION PHASE SHALL BE REPAIRED PRIOR TO CONTRACT DATE OF SUBSTANTIAL COMPLETION AT NO ADDITIONAL EXPENSE TO THE OWNER. 	<h3>SITE PLAN</h3> <ul style="list-style-type: none"> UGP UNDERGROUND ELECTRICAL PRIMARY FEEDER USE UNDERGROUND ELECTRICAL FEEDER UGC UNDERGROUND COMMUNICATIONS O/E OVERHEAD ELECTRICAL FEEDER O/P OVERHEAD ELECTRICAL PRIMARY FEEDER TV UNDERGROUND TELEVISION CABLE T UNDERGROUND TELEPHONE CABLE 												
<h3>GENERAL ELECTRICAL NOTES</h3> <ol style="list-style-type: none"> PROVIDE, INSTALL, AND COORDINATE ALL WORK INDICATED BY THESE DRAWINGS. THIS CONSISTS OF FURNISHING ALL LABOR, EQUIPMENT, SUPPLIES AND MATERIALS IN ADDITION TO PERFORMING ALL OPERATIONS INCLUDING CUTTING, CHANGING, & UNDERGROUND TRENCHING, BACKFILL & WAPPING NECESSARY FOR THE INSTALLATION OF COMPLETE POWER, LIGHTING, OR OTHER SYSTEMS AS SHOWN. PERFORM ALL ELECTRICAL WORK IN A NEAT AND WORKMANLIKE MANNER IN COMPLIANCE WITH ALL APPLICABLE, ADOPTED CODES, INCLUDING, BUT NOT LIMITED TO THE NATIONAL ELECTRICAL CODE (NEC), IBC, NFPA, AND ADA. ALL LOCAL AND STATE REQUIREMENTS WILL BE OBSERVED DURING THE PERFORMANCE OF THIS WORK. NOTIFY THE ENGINEER IN WRITING IF DISCREPANCIES BETWEEN CONTRACT DOCUMENTS AND ANY ASSOCIATED LEGAL OR SAFETY REQUIREMENTS ARE DETECTED. THE ENGINEER WILL NOTIFY THE CONTRACT DOCUMENTS ACCORDINGLY. IF THE CONTRACTOR PROCEEDS IN ANY MANNER WHICH IS IN VIOLATION OF ANY LOCAL, STATE, OR FEDERAL REQUIREMENTS, THE CONTRACTOR ASSUMES RESPONSIBILITY FOR THIS WORK AND WILL PROMPTLY CORRECT THE WORK, WHEN NOTIFIED WITHOUT ADDITIONAL COST TO THE OWNER. FIELD VERIFY EXISTING CONDITIONS PRIOR TO COMMENCING WORK. NOTIFY THE ENGINEER OF ANY DISCREPANCIES BEFORE PROCEEDING. NO CLAIM FOR ADDITIONAL COST OR TIME EXTENSION WILL BE ALLOWED WITHOUT PROPER NOTICE PLUS PRIOR DETERMINATION OF TIME AND COST TO THE OWNER. CLEAN THE ENTIRE ELECTRICAL SYSTEM AFTER COMPLETION OF THE INSTALLATION. REMOVE ALL FOREIGN MATTER, PAINT, DIRT, GREASE, AND UNNEEDED LABELS OR STICKERS FROM FIXTURES AND EQUIPMENT. REMOVE ALL RUBBISH AND DEBRIS ACCUMULATED DURING INSTALLATION FROM THE PREMISES. COORDINATE ALL PHASES OF THE ELECTRICAL WORK WITH THE ARCHITECT AND GENERAL CONTRACTOR. PERFORM WORK TO CAUSE AS LITTLE INCONVENIENCE AS POSSIBLE TO THE OWNER. OBTAIN FROM SYSTEM SUPPLIERS ALL WIRING DIAGRAMS FOR ALL EQUIPMENT PRIOR TO ANY ROUGH-IN. TO ASSURE THAT PROPER ELECTRICAL CHARACTERISTICS ARE PROVIDED, ANY INCORRECT WIRING OR DEVICES INSTALLED BY ELECTRICAL CONTRACTOR WITHOUT THE WIRING DIAGRAM SHALL BE CORRECTED AT ELECTRICAL CONTRACTOR'S EXPENSE. VERIFY ELECTRICAL DEVICE LOCATIONS WITH ARCHITECTURAL CASEWORK DETAILS PRIOR TO ANY ROUGH-IN. VERIFY FINAL LOCATIONS OF ALL SINKS WITH THE PLUMBING CONTRACTOR PRIOR TO ROUGH-IN. LOCATIONS ABOVE COUNTER AND BEHIND FINAL SINK LOCATIONS WILL BE SHIFTED A MINIMUM OF 8" TO THE REAR OF SINK. ANY ELECTRICAL DEVICES LEFT BEHIND SINK AT TIME OF FINAL ELECTRICAL WALTHROUGH WILL BE RELOCATED AT ELECTRICAL CONTRACTOR'S EXPENSE. PRIOR TO INSTALLATION, THE OWNER RESERVES THE RIGHT TO RELOCATE ANY ELECTRICAL DEVICE UP TO A DISTANCE OF 12", WITHOUT ADDITIONAL CHARGE. FIELD VERIFY AND COORDINATE THE EXACT LOCATION OF ALL SYSTEMS AND EQUIPMENT WITH ALL TRADES PRIOR TO INSTALLATION, WHERE EXACT LOCATIONS ARE NECESSARY. THEY ARE DIMENSIONED ON THESE DRAWINGS, WHERE THERE IS A QUESTION OF ADEQUATE CLEARANCE OR COORDINATION BETWEEN TRADES, THIS CONTRACTOR WILL PREPARE AS-BUILT DRAWINGS FOR ENGINEER'S REVIEW. CONTACT UTILITY COMPANIES (POWER, GAS, WATER, SEWER, TELEPHONE, CABLE, ETC.) PRIOR TO TRENCHING IN ORDER TO IDENTIFY UNDERGROUND UTILITIES. CONTRACTOR SHALL LOCATE SECONDARY SERVICE FEEDERS, UNDERGROUND BRANCH CIRCUITS, SPRINKLER LINES, ETC., PRIOR TO TRENCHING ANY CUT OR DAMAGED UNDERGROUND UTILITIES SHALL BE REPAIRED OR REPLACED AT CONTRACTOR'S EXPENSE. UNLESS OTHERWISE NOTED, USE COPPER CONDUCTORS RATED FOR 90V VOLTS, TYPE THHN/THWN INSULATION, MINIMUM WIRE SIZE #12 AWG (STRANDED) FOR #8 AWG OR LARGER, WITH WIRE-TYPE EQUIPMENT CONDUCTOR. RUN ALL WIRING IN CONDUIT, INCLUDING LOW VOLTAGE AND CONTROLS. UTILIZE 1/2 INCH E.M.T. CONDUIT MINIMUM, WHERE REQUIRED TO PROTECT FROM PHYSICAL DAMAGE, USE RIGID OR IMC TYPE CONDUIT. RUN CONDUIT CONCEALED UNLESS OTHERWISE SHOWN ON THE DRAWINGS. USE FLEXIBLE METALLIC CONDUIT WHERE NEEDED. PROVIDE EXPANSION FITTINGS FOR CONDUIT CROSSING EXPANSION JOINTS. SUPPORT ALL CONDUIT INDEPENDENTLY FROM THE BUILDING STRUCTURE. DO NOT SUPPORT FROM PIPING, MECHANICAL PIPING, SUSPENDED CEILING GRIDS, OR OTHER MEMBERS. USE ONLY ACCEPTABLE METHODS OF SUPPORT. TERMINATING SPRING, MAKE ALL JOINTS & SPLICES IN BRANCH CIRCUIT WIRING #10 AWG AND SMALLER WITH AN APPROVED SOLDERLESS TOOL, OR TWIST ON CONDUCTORS. FOR #8 AWG AND LARGER, USE HIGH COMPRESSION BARREL SPLICES WITH SHIRK-WRAP AND MANUFACTURER'S COMPATIBLE CONNECTORS IN GUTTERS AND SIMILAR LOCATIONS, BUT NOT ALLOWED IN RACEWAYS. LEAVE SUFFICIENT BLACK TO PERMIT 2 OR MORE SPLICES OR JOINTS TO BE REMADE IN CASE OF FAULT. EMT CONDUIT FITTINGS: IN ALL LOCATIONS USE STEEL SET SCREW TYPE OR "REGA" DIE CAST SET SCREW COUPLERS AND CONNECTORS. DIE CAST FITTINGS WILL NOT BE USED ON THIS PROJECT. DAMPHET LOCATIONS: USE STEEL COMPRESSION GLAND TYPE COUPLER AND CONNECTIONS. 	<h3>CODE ANALYSIS</h3> <table border="1"> <thead> <tr> <th>CODE</th> <th>DESCRIPTION</th> </tr> </thead> <tbody> <tr> <td>NMMC-2021</td> <td>NEW MEXICO MECHANICAL CODE (UMC)</td> </tr> <tr> <td>NMPC-2021</td> <td>NEW MEXICO PLUMBING CODE (UPC)</td> </tr> <tr> <td>NEC-2017</td> <td>NATIONAL ELECTRICAL CODE (NEC)</td> </tr> <tr> <td>NMCECC-2018</td> <td>NEW MEXICO ENERGY CONSERVATION CODE (IECC)</td> </tr> <tr> <td>NMIBC-2015</td> <td>NEW MEXICO EXISTING BUILDING CODE (IEBC) ALTERATION LEVEL 1-SECTION 503</td> </tr> </tbody> </table> <p>AREA AND OCCUPANCY CLASSIFICATION MULTI USE BLDG 28,852 SQFT. ASSEMBLY GROUP A-3. COMMUNITY HALL. NO FIXED SEATING. FULLY SPRINKLED</p> <p>PROJECT SCOPE ELECTRICAL: REPLACE FLUORESCENT LIGHTING WITH NEW LED LIGHTING AND CONTROLS.</p> <p>LEVEL 3 - ALTERATION (IEBC 503) -503.1. THE ... REPLACEMENT ... OF EXISTING MATERIALS, ELEMENTS, EQUIPMENT OR FIXTURES USING NEW MATERIALS, ELEMENTS, EQUIPMENT OR FIXTURES THAT SERVE THE SAME PURPOSE. -703.1 FIRE PROTECTION- ALTERATION SHALL BE DONE IN A MANNER THAT MAINTAINS EXISTING LEVEL OF PROTECTION. -705.1 ACCESSIBILITY- EXISTING ACCESSIBLE ELEMENTS TO REMAIN. -708.1 ENERGY CONSERVATION- NEW EQUIPMENT AND FIXTURES BEING INSTALLED MEETS OR EXCEEDS NM ENERGY CONSERVATION CODE.</p>	CODE	DESCRIPTION	NMMC-2021	NEW MEXICO MECHANICAL CODE (UMC)	NMPC-2021	NEW MEXICO PLUMBING CODE (UPC)	NEC-2017	NATIONAL ELECTRICAL CODE (NEC)	NMCECC-2018	NEW MEXICO ENERGY CONSERVATION CODE (IECC)	NMIBC-2015	NEW MEXICO EXISTING BUILDING CODE (IEBC) ALTERATION LEVEL 1-SECTION 503
CODE	DESCRIPTION												
NMMC-2021	NEW MEXICO MECHANICAL CODE (UMC)												
NMPC-2021	NEW MEXICO PLUMBING CODE (UPC)												
NEC-2017	NATIONAL ELECTRICAL CODE (NEC)												
NMCECC-2018	NEW MEXICO ENERGY CONSERVATION CODE (IECC)												
NMIBC-2015	NEW MEXICO EXISTING BUILDING CODE (IEBC) ALTERATION LEVEL 1-SECTION 503												
<p>NOTE: SOME OF THE SYMBOLS SHOWN MAY NOT APPEAR ON ALL DOCUMENTS OR PLANS.</p>													



SAN JUAN COUNTY MULTI-USE BUILDING
2022 LIGHTING REPLACEMENT PROJECT
41 RD 5568, FARMINGTON, NM 87401

REVISIONS	DATE	NAME
1		
2		
3		
4		
5		
6		

PROJECT NO: 2204
DATE: 2022-06-28
DRAWN BY: NB
CHECKED BY: DS

COPYRIGHT MECHANICAL
ELECTRICAL & ENVIRONMENTAL
ENGINEERING, INC. 2007

SHEET TITLE:

G001

PROJECT INFORMATION

